



322 King Street, Hammersmith, W6

£1,400 Per Month

Modern studio flat situated on the second floor that has been completely redecorated to a high standard in the heart of Ravenscourt Park.

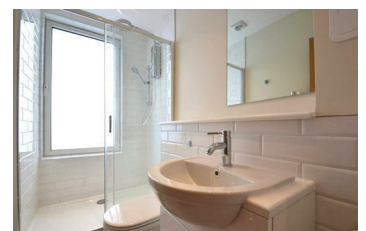
The property comprises a bright room with large windows, a modern open plan kitchen and a stylish bathroom.

The property benefits from double glazed windows, wooden floors and ample natural light.

The property is located minutes away from restaurants, cafes and amenities Chiswick High Road and King Street.

The property is also located only a short walk from Ravenscourt Park & Stamford Brook stations (District line) while Hammersmith station (Piccadilly, District, Circle and Hammersmith & City lines) is also within easy reach.

- Second Floor flat
- Modern open plan kitchen
- Ample natural light
- Close to Ravenscourt Park & Stamford Brook stations
- Bright studio
- Wood floors
- Many amenities nearby
- Stylish bathroom
- Large double glazed windows
- Easy access to Chiswick High Road



Energy Efficiency Rating		Environmental Impact (CO ₂) Rating	
Current	Potential	Current	Potential
A	A	B	B
B	B	C	C
C	C	D	D
D	D	E	E
E	E	F	F
F	F	G	G
G	G		

England & Wales 2008/1/EC